

INSIDE OUT

COUNTY MAGAZINE

Autumn 2010



Derbyshire LTA
Ashe Place
Vincent Street
Derby, DE23 8BF
Tel: 01332 273770

County Secretary &
Tournament Co-ordinator
Bob Gibson
Tel: 01332 601645
Robert@chello.freeserve.co.uk

Tennis Development Manager
Paul Sheard
Tel: 07971 141364
paul.sheard@LTA.org.uk

INSIDE THIS ISSUE...

- ▶ Tennis development Manager Report
- ▶ Sam Ferguson wins I2&U National Championships
- ▶ Rob Briggs appointed new Performance Coach at Chesterfield
- ▶ Katie Higson appointed as new Tennis Manager at Graves TC
- ▶ New Tennis Courts at Queens Park in Chesterfield
- ▶ Broomhead claims Veterans Doubles Crown
- ▶ LTA backs International Tennis Federation's 'Tennis IO' Programme
- ▶ LTA Launch New Registration Scheme in Chesterfield
- ▶ Derbyshire Tennis Community Mourns Long Serving County Secretary

Derby Tennis Association
is supported by:

centrica
Wilson.



Snake Lane Design

Creative Graphic Design for Print & Web
www.snakelane.co.uk

TENNIS DEVELOPMENT MANAGER REPORT



We have now got a confirmed date for the Second Annual Derbyshire Tennis Awards Evening.



The summer tennis season is now rapidly drawing to a close and it has certainly been a busy few months for Derbyshire Tennis. We have seen some outstanding results from players both young and old in the county during recent weeks and it is very encouraging that Derbyshire players help the county to continue to punch above its weight on an on going basis.

Margret Robinson

It is with great sadness that we have to report the recent death of Margaret Robinson. Margaret was a familiar figure to tennis people across Derbyshire and has been a hugely influential figure in the county over the last twenty years. There is an article on her massive contribution to Derbyshire Tennis in the newsletter and our thoughts are with her family at this difficult time.

County Championships

The County Championships took place recently at their new home of Duffield TC and despite the best efforts of the weather to ruin the tournament; the event was very well received overall. Congratulations to everyone that won events at the closed and I would like to thank Duffield for doing an excellent job as the host club. A full report on the tournament will appear elsewhere in the newsletter.

Changes to club affiliation method

As you may be aware, the LTA has recently

introduced changes to the way tennis clubs affiliate and clubs now pay on a per court registration basis. The new system is much simpler than the old method of affiliation based on the number of adult and junior members and in the majority of cases tennis clubs will be better off financially. The LTA are very keen to ensure that clubs re-invest the savings to help develop and grow the club on a long term basis. To this end, we will be holding a [Club Forum on Wednesday 20th October](#) at the Genesis Centre in Alfreton in October to stimulate ideas on how clubs can effectively re-invest the money. The county office will contact clubs shortly with an official invite.



Reminder...

I would like to remind club officials that, if you haven't already, you must complete the on line affiliation process. There will be no paper Affiliation forms issued for the coming year, all information must be entered on-line and then payment is to be made via BACS, credit card or cheque. I am aware that some clubs and club officials are reluctant to complete the on-line



Affiliation process but from October there will be no alternative I am afraid. If the Club Main Contact does not wish to complete the on line affiliation and you would like another club official to complete the process then please contact Kate King at the county office and she will provide them with the necessary authority to follow the process.

Annual Derbyshire Tennis Awards Evening

I am pleased to report that we have now got a confirmed date for the Second Annual Derbyshire Tennis Awards Evening. The event will take place on Friday 11th February 2011 and will once again be held at Pride Park Stadium, Derby. After the tremendous success of this year's event, we will have to go some distance to improve on what proved to be a fantastic night but planning is already well underway to ensure that everyone has a night to remember. By the time you read this newsletter, the awards [nomination from should be available on the county website](#) and through club secretaries and coaches and I would encourage everyone to put nominations forward.

Where's Derbyshire in the LTA County League Table?

It is pleasing to be able to report that Derbyshire is currently in number one position on the LTA County League Table for junior competition. This is based on progress towards our target on the number of regularly competing juniors (players that have competed in six or more recorded matches in the last year), and the figure for Derbyshire has recently gone above four hundred for the first time. The LTA also received some great news earlier this month when the ITF launched the Tennis 10 Programme which will be based on the LTA National Competition Framework and will be rolled out across the world. A report on this will appear in the newsletter.

I look forward to seeing you around the county over the coming weeks and if you need my assistance in any area then please do not hesitate to get in touch.

Paul Sheard

LTA Tennis Development Manager
Derbyshire and Leicestershire





Sam Ferguson wins 12&U National Championships

Derbyshire junior Sam Ferguson (pictured) was celebrating in August after winning the 12&U boys' title at the AEGON Junior National Championships at the West Hants Club in Bournemouth. Top seed Ferguson defeated Omari Owens-Maxwell 6-0, 6-1 to win the title. Ferguson produced an impressive display in the final as he raced into a commanding lead, securing the first set to love before closing out the match for the loss of just one game in the second set.

"I'm very pleased" said Ferguson afterwards. "I definitely felt I brought my best tennis to the court and dominated from the start. I didn't give him many chances to get back into the match. It was hard at the start of the week because it was raining and then I thought as the week progressed it definitely got better and I played my best tennis towards the end of the week."



Rob Briggs appointed new Performance Coach at Chesterfield

Chesterfield LTC has appointed Derbyshire county player Rob Briggs as the new Performance Coach at the club. Briggs returns for his second spell at Chesterfield after having spent just under two years working for the LTA as the Talent Performance Co-ordinator for Warwickshire.

Briggs, who got married earlier in the summer, will re-join the club in early November. Rob spent the early part of his career as a player and coach at Watchorn LTC and on his return will focus on the development of the performance programme at Chesterfield.

In other appointments, former Derbyshire coach Matt Allen has recently left his post of LTA Talent Performance Co-ordinator for Gloucestershire and Hereford & Worcestershire. Matt is now working for Active Away Holidays with former colleague Steve Davis. Former county player Richard Morley has also recently returned to Derbyshire after more than a decade coaching in the United Arab Emirates.



Katie Higson appointed as new Tennis Manager at Graves TC

Congratulations to Derbyshire County player Katie Higson who has recently started a new post as the Tennis Manager at Graves Tennis and Leisure Centre in Sheffield. Kate lives in South Derbyshire and plays at Ashby Castle TC.

Katie has worked for the Lawn Tennis Association for the last three years as the County Administrator for Staffordshire. We would like to wish her the very best of luck in her new role.

New Tennis Courts at Queens Park in Chesterfield

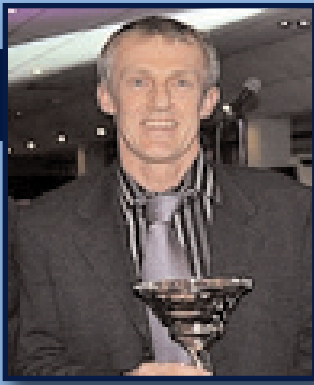
Budding tennis players can now take advantage of the recently refurbished tennis courts at Queen's Park Annexe in Chesterfield. The £20,000 facelift includes a new macadam surface with coloured court markings, drainage, new tennis posts and nets and repairs to fencing.

The improvements to the tennis courts were funded from a £10k grant from Viridor Credits, with the remainder funded by Chesterfield Borough Council.

The tennis courts are available to the general public for casual usage with prices ranging from £5.70 per hour per court for adults, and £4.60 per hour per court for Under 16's/Concessions. The tennis courts also hosts Queen's Park Tennis Club who take part in the Chesterfield & District and Sheffield & District Tennis Leagues.

Cllr David Stone, Lead Member for Safe, Healthy and Active Communities at the Council said: "Tennis is a very popular sport so we're pleased we've been able to provide funding to improve the Courts. We hope existing and new users will enjoy playing tennis at Queen's Park and who knows there may be a new Andy Murray in the making!"





Broomhead claims Veterans Doubles Crown

Derbyshire coach Ashley Broomhead was celebrating in August after reaching two finals and winning a doubles title in the British Veterans Grass court championships at the All England Club.

Broomhead, 52, unseeded in the 50's age group beat three seeds on his way to the final. In the final, Ashley just missed out on the title losing 6 – 4, 3 – 6, 6 – 4 to Lincolnshire's Alec Allen. Ashley, however, was not to be denied in the doubles when he joined forces with Leicestershire's Richard Wayman. The duo were triumphant in the final and saw off Essex's Martin Guntrip and Surrey's Phil Brook 7 – 6, 7 – 5. Broomhead was named Derbyshire Veteran of the Year at the Derbyshire Annual Tennis Awards earlier this year.

LTA backs International Tennis Federation's 'Tennis 10' Programme

The Lawn Tennis Association (LTA) has welcomed the International Tennis Federation's recent launch of a new programme 'Tennis 10s' intended to increase participation among the 10 and under age group.

The programme, which will come into effect in January 2012, is designed to make tennis more fun and easier to play and will see the introduction of modified courts, short duration scoring methods and the use of slower balls with regular balls and full sized courts no longer permitted in 10 and under competition.

Roger Draper, Chief Executive of the LTA, said: "We welcome this move by the ITF to introduce 'Tennis 10s' which we believe can help bring significantly more kids into our sport around the world, making it easier and fun to both play and compete.

"Our experience with mini tennis in Britain over the last few years is that it can also improve the level of technical skill and matchplay ability of our talented youngsters."

The current LTA mini tennis structure sees three categories of mini tennis catering specifically for children aged up to 10 year old. This structure is aligned with the ITF's 'Tennis 10s'.

In mini tennis at 8 and under players use a slower red ball on a smaller court with a specially lowered net. At this level competitions are usually team based, allowing children to compete in lots of short matches.

As players continue to develop they are encouraged to move on to the next phase which is orange ball mini tennis specifically designed for players aged 8 and 9. It is played on slightly larger courts than red ball, with bigger rackets and balls that are not as soft as red balls.

Green ball is the next step after orange ball mini tennis. It is played on a full tennis court, with bigger rackets and balls that are a little harder than orange balls. It's the next stage to go through before players begin playing with a full compression yellow ball on a full sized court at age 11.

LTA Launch New Registration Scheme

What is Registration?

Places to play registration will see all places to play paying a registration fee to their County Association based on the number of courts they have access to on a regular basis. The standardised fee will be applicable to tennis clubs, park based programmes, university clubs, indoor pay and play centres and programmes based on school sites. In the past the fees have been calculated on the number of members (adults and juniors) at the club or place to play.

What are the fees?

- The fee will be calculated based on the number of courts available for regular use. For the avoidance of doubt "Regular use", in respect of places that do not have permanent access through ownership (freehold or leasehold), means the place to play has access to the courts on an exclusive basis for at least 15 hours per week for 40 weeks of the year.
- £100 per court (all indoor and outdoor surfaces apart from grass)
- £50 for grass courts (50% discount)
- Places to play will only be charged on the first 12 courts at their place to play. No charge will be made for the 13th court or any additional courts
- Places to play must pay for all £100 courts before grass courts are included in the calculation
- A maximum registration fee of £1,200
- If a place to play is nomadic and does not have regular access to courts, a flat fee of £200 will apply
- No charge for purpose built/stand alone mini tennis courts or kid zones
- £200 first year introductory fee for all new places to play that haven't been affiliated to their County Association since October 2005

Benefits of places to play registration

- Free British Tennis Membership for all tennis members at the place to play. This enables the British Tennis Member to enter the place to play Wimbledon ticket ballot, obtain a rating, receive regular relevant communications about British tennis and receive preferential rates on tickets for major events
- Civil liability protection and directors and officers insurance
- Places to Play Self Service system – a tool to promote your place to play on the internet
- Access to BASeLine, the Business Advice and Legal Service hotline
- Access to Clubmark – a club management resource to professionalise your place to play
- Facility guidance and advice, including access to a technical services visit for potential projects and maintenance work
- Access to additional resources such as 'Book It' – online court booking system, 'Grant Search Tool' – gives you access to thousands of potential funding opportunities
- Eligibility to compete in LTA competitions

Who will be eligible for free BTM?

Places to play will be offered free BTM to the following tennis players linked to their place to play.

- Tennis members (adults and juniors) of registered places to play
- Card holders (adults and juniors) at a registered place to play
- Adults and juniors involved in an organised tennis programme at a place to play

When will places to play registration start?

Places to play registration will start from October 2010. The registration year will run from October – September.

How will the fees be collected?

You will be able to pay via BACS or cheque once you have downloaded your invoice from Places to Play Self Service.

When will we have to pay?

All places to play will be prompted to update their details online and pay their registration fees from the 1st October 2010 and will be given until the 28th February 2011 to pay their registration fees. If a place to play has not paid their registration fee by the 28th February shall, if the LTA Main Board so resolves, cease to be eligible for grants and other benefits.

Why are we making the change?

Affiliation fees have for many years been calculated on the number of members at a club. This isn't a fair system as places to play that are doing a great job in growing their membership and the game of tennis within their community are required to pay more to year on year to affiliate to their County Association. Also, there are many places to play that don't have a membership scheme, therefore affiliation didn't provide route for them to link to the LTA via their County Association.

In addition, the benefits of affiliation are for the club or place to play as a whole rather than the individual members. Calculating club affiliation fees based on the number of members at the club or place to play caused a bit of confusion when we introduced British Tennis Members our individual membership scheme.

Benefits to places to play

- 80% of currently affiliated places to play will pay less as a result of the new system
- You will know what you will pay year on year
- You won't be penalised for growing your membership

What's the catch?

There is no catch and the LTA don't intend to charge for British Tennis Membership. However, through the LTA Tennis Development Managers, want to work with you to support you to invest your additional revenue in projects that will support you to develop your place to play and grow/retain your members. e.g.

- You might want to appoint a coach and use the payment to secure coaching services
- Or support your coach to upgrade their coaching qualification so they improve the service they offer to your members and participants
- Organising adult and junior competition could be a priority for your place to play and you might want to appoint a competition coordinator
- Establishing or developing school club links
- You may be saving for a facility project or clubhouse improvements and choose to ring fence the additional revenue to your project
- Buying equipment such as mini tennis orange lines
- Advertising or promotion to grow membership
- Enhancing sinking funds
- Investing in systems that will improve the experience of members e.g., membership databases

Derbyshire Tennis Community Mourns Long Serving County Secretary

Sadly, Mrs Margaret Robinson, who was County Secretary of the Derbyshire Tennis Association for many years, has lost her battle with cancer. She was widely known in the tennis world, both locally and nationally.

Locally, Margaret was a member of Duffield tennis club and on the Derbyshire Tennis Association Management Committee for 22 years. Her hard work in running and refereeing many of the local tennis tournaments for juniors and adults won the affections of many tennis players. She was instrumental in the building of the first County Tennis Centre in the country which opened in Ashe Place in Normanton in 1993. During her time as Derbyshire County Secretary, Margaret raised £0.5 million for Derbyshire tennis.

In February 2010, Margaret was presented the Lifetime Achievement Award at the inaugural Derbyshire Tennis Awards in recognition of all her hard work and achievements.

Nationally, Margaret represented Derbyshire as a Councillor on the LTA board for 21 years looking after Derbyshire's interests as well as looking to improve tennis nationally. In 2002, she received the LTA Meritorious Service Award for volunteer work in all aspects of the game in the County and in 2006, Sophie, Countess of Wessex presented Margaret with the CCPR Torch Trophy Trust Award for outstanding voluntary service to Lawn Tennis.

Roger Draper, LTA Chief Executive said:
"Margaret made an outstanding contribution to tennis in Derbyshire over many years, as lead volunteer, an excellent fundraiser for local tennis, and in developing the indoor county centre. She thoroughly deserved her Lifetime Achievement award from Derbyshire Tennis Association and she will be sadly missed. Our thoughts are with her family at this difficult time."



Margaret recently retired from her tennis commitments and has fought a hard battle against her cancer. She will be very sadly missed by her husband, David and their two children, Sarah and Tim as well as by her many friends.

Festival of Tennis

County Closed Championships

The Festival of Tennis which brings together the Counties Closed Championship Events for Mini Tennis Red all the way up to Veterans was played for the first time ever at Duffield Tennis Club. A successful tournament took place despite a number of rain interruptions.

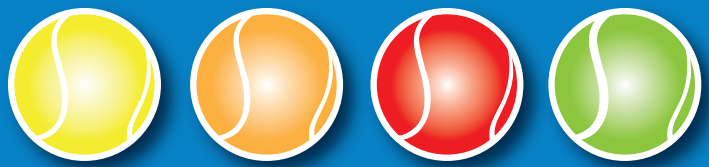
Main story has to be Chris Simpson, who still eligible to play in the Junior events, won the Mens Senior Singles and Mens Doubles. Chris narrowly missed out on a Senior Grand slam when he lost a Match Tie Break in the Senior Mixed Final to James and Jane Rushby 10-8. Jane has won the Senior Mixed with two of her three sons, Ben and James. Jane has to win with Tom to complete her own hat trick.

Sam Ferguson, fresh from his success at the British National Boys Under 12 final, won both the Under 12 and Under 14 boys titles, beating close rival Jay Clarke on both occasions. Katy Wilson won the Bramah Trophy, awarded to the Junior Player who in the opinion of the Tournament Committee achieves the most during the tournament, by winning the Girls Under 14, 16 singles and U' 15 Girls Doubles finals.

In the Vets, Duffield pair of James Foulk and Mark McAnulty served up an exciting Over 35 Mens Final, with James taking the 3rd Set 7-4 on a tie break.



Finals Results



Singles

Boys Under 8 Singles William Toft bt James Donlan 10-5
Boys Under 9 Singles Harry Finney bt Louis Kybird 7-1, 7-5
Boys Under 10 Singles Harry Finney bt Reuben Shahidullah 4-2, 4-2
Boys Under 12 Singles Sam Ferguson bt Jay Clarke 6-2, 6-2
Boys Under 14 Singles Sam Ferguson bt Jay Clarke 6-1, 1-6, 6-1
Boys Under 16 Singles Jacob East bt Mandeep Sangha 6-4, 3-6, 7-5
Boys Under 18 Singles Sam Ashcroft bt Jon Hughes 6-4, 6-3
Mens Under 21 Singles Chris Simpson bt Ben Rushby 6-1, 6-0
Mens Senior Singles Chris Simpson bt Simon Thornewill 7-6(3), 6-4
Mens Over 35 Singles James Foulk bt Mark McAnulty 7-5, 2-6, 7-6(4)

Girls Under 9 Singles Victoria Allen bt Charlotte Alin 7-1, 7-1
Girls Under 10 Singles Hannah Davey bt Grace King 4-0, 4-0
Girls Under 12 Singles Millie Devie-Smith bt Hannah Davey 6-2, 6-1
Girls Under 14 Singles Katie Wilson bt Emily Hewland 6-2, 7-5
Girls Under 16 Singles Katie Wilson bt Olivia Nelms 6-7(5), 6-1, 7-5
Girls Under 18 Singles Mary Langen bt Sarah Ashcroft 7-5, 6-0
Ladies Senior Singles Katie Higson bt Gemma Praditngan 6-2, 6-0

Doubles

Boys Double Under 12 Christian Mills & Zak Wright
bt James Ashcroft & Callum Edworthy 6-4, 6-4
Boys Doubles Under 15 Curtis Clarke & Jay Clarke
bt Robert Gardner & Mark Eastall 6-0, 6-0
Boys Double Under 18 Ben Rushby and Jacob East
bt Jon Hughes and Harry Winter 6-4, 3-6, 1-0(4)
Mens Doubles Chris Simpson & Steven Amey
bt Simon Thornewill & James Grindell 6-3, 7-6(1)
Girls Doubles Under 12 Hannah Davey & Grace King
bt Kelsey Hodgson & Teya Staniforth 7-5, 6-1
Girls Doubles Under 15 Katy Wilson & Rebecca Williams
bt Sarah Ashcroft & Mary Langen 7-6(5), 6-7 (5), 1-0(3)
Ladies Doubles Katie Higson and Gemma Praditngam
bt Jane Rushby & Amy Harris 6-4, 6-1
Mixed Doubles Under 14 James Ashcroft & Lauren Prince
bt George Finney & Emily Bailey 6-4, 7-5
Mixed Doubles Under 18 Ben Rushby & Olivia Nelms
bt Jamie Praditngam & Sarah Ashcroft 6-1, 6-7(4), 1-0(9)
Senior Mixed Doubles James Rushby & Jane Rushby
bt Chris Simpson & Olivia Nelms 4-6, 6-2, 1-0(8)

After the huge success of the inaugural event,
you won't want to miss the second

Annual Awards Evening

Friday 11th February 2011

7.00 pm - Late Toyota Suite, Pride Park Stadium, Derby

A packed evening including
the presentation of the following awards:

Mens, Womens, Boys and Girls (18&U) Player of the Year
Veteran and Club Player of the Year
Coach and Club of the Year
Volunteer of the Year and Lifetime Achievement Award
and the Derek Wardle Award
Plus Presentation of the Derby Area League Divisional Winners

Special guest speaker
Andrew Jarratt
Wimbledon Referee



Also includes superb meal, prize raffle and disco
Tickets fantastic value at only £20

Book a table for your club and make an occasion of it.

Places limited – please book early to avoid disappointment!

To reserve your place please contact Kate King on

01332 273340

Award nomination forms available from your club or visit the website
www.derbyshiretennis.net

Information

Contacts:

Derbyshire LTA
Ashe Place
Vincent Street
Derby, DE23 8BF
Tel: 01332 273770

County Secretary &
Tournament Co-ordinator
Bob Gibson
Tel: 01332 601645
Robert@chello.freeseerve.co.uk

Tennis Development Manager
Paul Sheard
Tel: 07971 141364
paul.sheard@LTA.org.uk

Talent Performance Co-ordinator
Andy Barnes
Tel: 07958 291127
andy.barnes@LTA.org.uk



We are now on

Facebook

www.facebook.com/derbyshiretennis

Next Issue: Winter 2010

Please submit info/content to:

James Grindell
e-mail: james.grindell@btinternet.com